

What Makes An Effective Meeting?

- ✦ The youth invites as many people as possible who can help them reach their goals
- ✦ Each participant recognizes that the meeting is youth-centered
- ✦ Each participant has a willingness to participate in the action plan for the youth
- ✦ Each participant is open to the possibility of maintaining a lifelong, permanent connection to the youth

"Youth permanency to me means someone that won't just be there for the moment, but is there for the long-term and will stick by my side regardless of what's going on."

-A Foster Youth

Your Permanency Team Meeting:

Date: _____

Time: _____

Location: _____

Social Worker: _____

Social Worker's Phone: _____

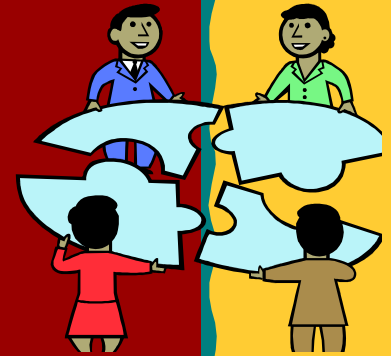
If you have questions or need help with :

- ✦ Transportation
- ✦ Child Care
- ✦ Translation
- ✦ Other Special Needs

Please contact the Social Worker listed above.

275 Beck Ave.
Fairfield, CA 94533
Phone: 707-784-8791
24 Hour: 800-544-8696

PERMANENCY
TEAM
MEETINGS



SOLANO COUNTY
R.O.C.K.S

What is a PTM ?

- ✦ PTM is a conference to find permanency for youth in long-term foster care
- ✦ The meeting is held to identify and establish permanent connections for the youth
- ✦ The conference is youth centered

When does a PTM occur?

- ✦ When a youth cannot identify a permanent connection to at least one adult committed to providing a safe, stable and secure parenting relationship, love and lifelong support

~or~

- ✦ When a youth is in a court ordered planned permanent living arrangement of Foster Care

~or~

- ✦ When a youth is preparing to emancipate from the foster care system

Who attends a PTM?

- ✦ The youth, who must approve all attendees
- ✦ Social Workers (past and present)
- ✦ Guardians/Foster Parents
- ✦ Therapist/Counselors/CASA
- ✦ Friends and other people important to the youth

Why have a PTM?

- ✦ Youth of all ages deserve legal permanence
- ✦ Foster Care is not a permanent connection
- ✦ Youth have better outcomes if they leave foster care with a permanent life long connection to a caring adult
- ✦ Youth need to be actively involved in planning for their future
- ✦ Youth receive support and ideas from people who are important to them and who can help them meet their goals
- ✦ Connections solidify the youth's identity and clarify personal history

What happens at a PTM?

- ✦ A facilitator guides the meeting and assures it remains youth-centered
- ✦ Participants and youth identify the youth's strengths, long-term and short-term goals
- ✦ Participants work as a team to find legal and emotional permanence for the youth
- ✦ Participants will decide how often to meet, to ensure tasks are completed and goals are met
- ✦ An action plan is completed in which every participant, including the youth, has a share in helping the youth obtain permanent connections and establish stability and security prior to leaving the foster care system
- ✦ Participants have an opportunity to volunteer to be in a youth's "circle of support" and write their intentions to maintain lifelong connections to the youth